



GEARHEADS Frame size 61mm sq. (2.4 in.sq.)

METAL TYPE & BALL BEARING TYPE

▶ **RATED TORQUE OF GEARHEAD**

MODEL	Speed(rpm)		500	300	200	120	100	60	50	30	20	15	10	6	5	3	2	1	
	Ratio	Speed	50Hz	3	5	7.5	12.5	15	25	30	50	75	100	150	250	300	500	750	1500
			60Hz	3.6	6	9	15	18	30	36	60	90	120	180	300	360	600	900	1800
L7HK□M L7HK□B L7G10D(DECIMAL)	High	kg-cm	2.7	4.5	6.7	11.1	13.4	20.1	24.1	36.3	50	50	50	50	50	50	50	50	
	Low		1.0	1.7	2.6	4.3	5.1	7.7	9.2	13.9	20.8	27.7	41.6	50	50	50	50	50	
	High	N-m	0.26	0.44	0.65	1.09	1.31	1.97	2.36	3.56	4.90	4.90	4.90	4.90	4.90	4.90	4.90	4.90	
	Low		0.10	0.17	0.25	0.42	0.50	0.75	0.90	1.36	2.04	2.72	4.07	4.90	4.90	4.90	4.90		
	High	oz-in	37	62	93	155	186	279	335	504	694	694	694	694	694	694	694	694	
	Low		14	24	35	59	71	106	128	192	289	385	577	694	694	694	694		

- * The normal torque is that the motor and gearhead are directly coupled.
- * Insert the denominator of reduction ratio in □ of gearhead model name.
- * Actual rotation speed is 2~15% less than synchronous speed.
- * ■Color indicates that the rotation of gearhead shaft is in opposite direction as output shaft of motor.

With Decimal Gearhead

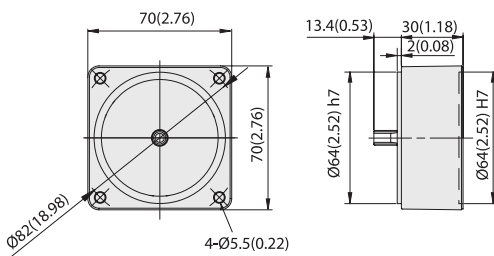
SPEED CONTROL
INDUCTION MOTORS

DIMENSIONS

Unit : mm(inch)

DECIMAL GEARHEAD

L7G10D

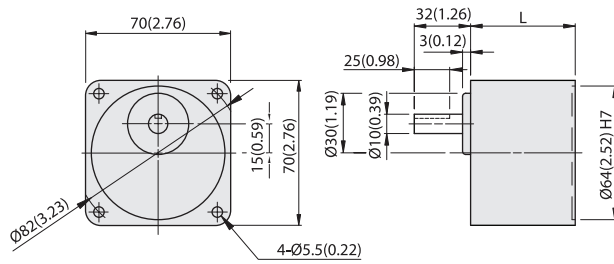


WEIGHT 0.3kg(0.66 lb)

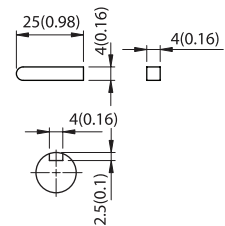


GEARHEAD

L7HK□M(B)



GEAR RATIO	L		WEIGHT		BOLT
	mm	in	kg	lb	
1/3~1/18	32	1.26	0.45	1	M5x50
1/20~1/200	42	1.65	0.55	1.2	M5x65



KEY SIZE

L7HK□M(B) + L7115P□LT

